



**Aspect Z** is a multi award winning architectural company with over 22 years industry experience. As architects and builders, we offer expertise unable to be matched by other granny flat builders or prefabrication factories.

We provide architect designed site specific housing which is sustainable and more comfortable to live in than the typical granny flat available on the market. Our hand picked team of quality tradespeople ensure that the quality of our construction is second to none.

Please visit our website for more information:

[aspectz.com.au](http://aspectz.com.au)

### WHY ASPECT Z?

Our granny flats are not prefabricated 'pods'. Our dwellings are site built by quality handpicked tradesmen to provide an equal standard and solidity to what you would expect in any main dwelling.

The costs involved with factory construction, transport and crange simply do not apply, therefore allowing higher quality finishes and materials to be utilised.

Our timeframes are able to match factory built timing.

Aside from our base design, limitless custom designed options are possible.

Aspect Z granny flats are **architect designed** with a focus on internal comfort, quality detailing and materials, and functional spaces.



## *Maximise the use of your land with ... ALTIUS*

### THE GRANNY FLAT IS BACK IN VOGUE

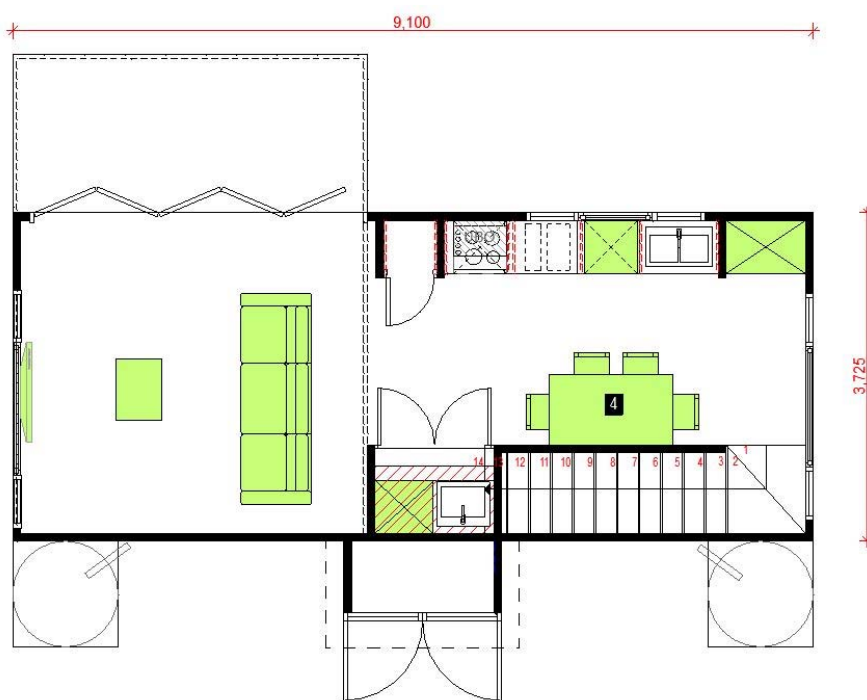
In times where land supply and housing volume is struggling to match demand, the traditional 'Granny flat' is back in focus. Recent NSW Legislation allows a 60m<sup>2</sup> (max) Granny flat or 'Secondary dwelling' to be placed on the same land as the principal dwelling.

### WHAT ALTIUS by ASPECT Z CAN OFFER YOU

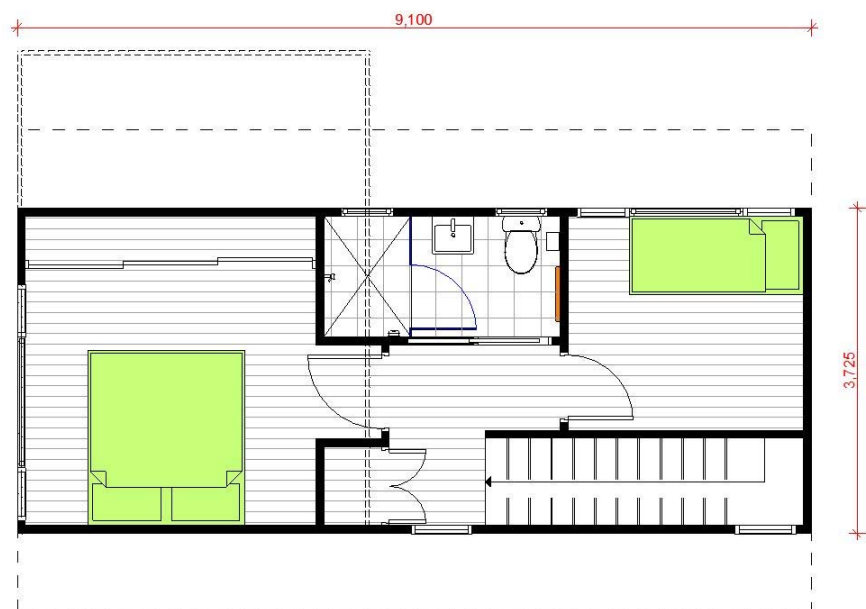
- A sustainable two bedroom linear design, focused on indoor – outdoor living.
- Specialized for tight sites.
- Open plan living with spacious internal spaces.
- High quality finishes, and exacting workmanship.
- Well designed kitchens and utility spaces.
- Concrete floor construction as standard, protecting your investment from termite assault.
- LED lighting throughout.
- Quality insulation, rainwater tank, instantaneous gas hot water and performance glazing as standard.
- Generous deck space accessed by the open planned living space – get the most out of indoor-outdoor living and maximise your views.
- Stand alone accommodation for grandparents, extended family, guests, or tenants.
- A high return rental investment. Make the most of the high rental market demand.
- Sustainable design means less impact on your power and water bills.
- Added investment on your property value
- A modern, architecturally designed addition to your existing home.

[www.aspectz.com.au](http://www.aspectz.com.au)

Aspect Z. 74 Maliwa Road NARARA NSW 2250, P (02) 4321 0970 M 0402 219 960 ABN 11535755674, LIC 262763C.  
Nominated Architect Paul Zaia NSW ARB 7016



**GROUND FLOOR PLAN**



**UPPER FLOOR PLAN**

**WHAT ASPECT Z DO FOR YOU**

- Design your granny flats according to your needs.
- Obtain authority approvals on your behalf.
- Build your granny flat to exacting standards.

**QUALITY INCLUSIONS AND MATERIALS AS STANDARD**

- At Aspect Z we don't believe in short cuts. Every Aspect Z Granny Flat is built to the same standard you could expect in any of our custom built homes.
- Quality inclusions, fitments and building materials come as standard in every Aspect Z Granny Flat.
- See our website or contact our office for a full inclusion, exclusion and pricing details.

**WANT TO BRING ALTIUS by Aspect Z HOME TO YOUR HOUSE?**

- For further information or enquiry please contact Paul via mobile **0402 219 960**, phone **(02) 4321 0970** or email [paul@aspectz.com.au](mailto:paul@aspectz.com.au)

**Altius:**

*Adverb*

1. Latin for "Faster, Higher, Stronger"

2. A granny flat perfectly designed to maximise light, air and views throughout the 2 storey granny flat. Welcome in the bright daylight and make the most of your views.



[www.aspectz.com.au](http://www.aspectz.com.au)

Aspect Z. 74 Maliwa Road NARARA NSW 2250, P (02) 4321 0970 M 0402 219 960 ABN 11535755674, LIC 262763C